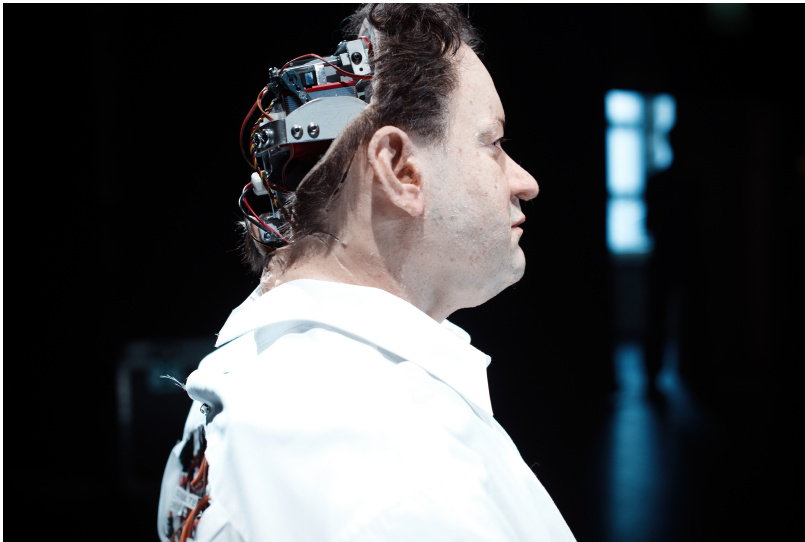


UNCANNY VALLEY



Contact:

Monica Ferrari
ferrari@rimini-protokoll.de
+49
30-2000506103

Münchner Kammerspiele:
STEFAN KAEGI / THOMAS MELLE

A performance, which poses the question of our relation to the artificial body and to the humanoid encounter.

For UNCANNY VALLEY the writer and playwright Thomas Melle allowed an animatronic double of himself to be made. This humanoid takes the author's place and throws up questions: what does it mean for the original when the copy takes over? Does the original get to know himself better through his electronic double? Do the copy and his original compete or do they help each other?

„Rimini Protokoll (Stefan Kaegi) has staged the exact robot-alter-ego replica of the author Thomas Melle, a replica free of all human inconveniences. In the voice of Melle it reflects among other things about how the digital doppelgänger is free of those personal bipolar episodes which the human Melle is particularly frightened of during public readings. One develops empathy for it and questions how this man can handle sitting with that unnaturally rectangular crossed leg for so long. The artificial Melle fuses emotionally inseparable with the Melle made of flesh and bones. And faced with the self-deception one is reminded of how 20 years ago the best friend was worrying about her Tamagotchi if once she forgot to feed the digital animal on time.“ (Oct 2018, Süddeutsche Zeitung)

Stage Dimensions: min. width 8m; depth 6m; hanging points min. 4m

Visitors per show: 80-180 (in max. 8-9 rows)

Shows per day possible: 3

Duration: 60 min.

Special tec. requirements: Performance optional in english, german or French with audiotranslation in other languages.

Rehearsal period: 1 day for arrival of crew and robot , 1 day for set up & rehearsal

Rimini Crew travelling: 3 - 4 persons

Local crew needed: a technician from each department is needed on standby