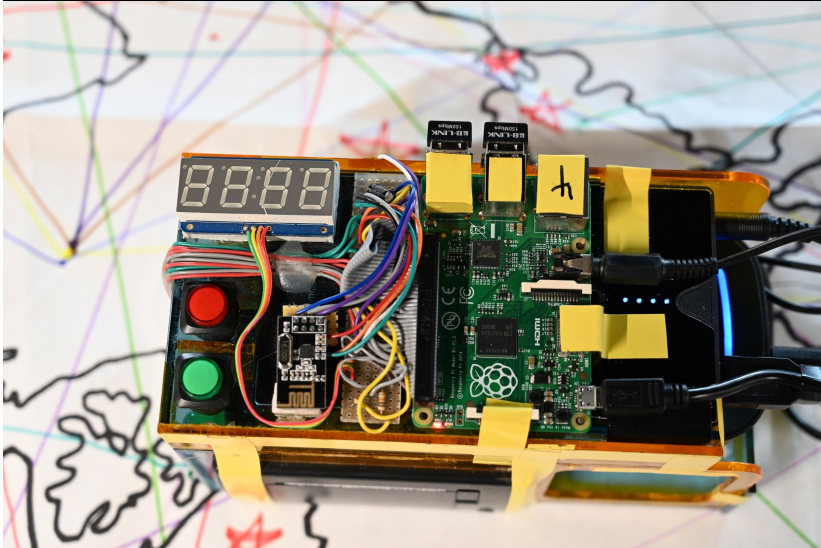


# School Visit Europe



## Contact:

Louise Stölting

[stoelting@rimini-protokoll.de](mailto:stoelting@rimini-protokoll.de)

+49 30  
2000506102

School Visit Europe is a performance you can put in your hand luggage - big ideas are rarely presented so intimately. What is Europe actually? Is it a geographic border, a cultural identity, a coalition of states? It is said over and over that Europe is an ever changing idea - too theoretical, as the individual can tell from their own experience. Rimini Protokoll contrasts this abstract idea of Europe with the reality of a class room. 15 students become part of a performance in a class room that interweaves personal stories and the political mechanisms of Europe. How much Europe is in us all?

You can host School Visit Europe in your own class. Each performance takes place in a different class room and so the performance will travel through hundreds of schools throughout Europe, building a network that rather than growing from a centre, stretches from front door to front door across the continent.

[Please also check the online archive of this project](#)

**HAUG / KAEGI / WETZEL**

School Visit Europe brings pupils together at one table and puts questions about Europe right in the middle.

**Stage Dimensions:** classroom

**Visitors per show:** 15 pupils/ adolescents between 13 and 19 years old

**Shows per day possible:** 2 or more

**Duration:** 90 minutes

**Rehearsal period Europe:** 2-3 days

**Rehearsal period World:** 2-3 days

**Rimini Crew travelling:** 2-3 pax

**Local crew needed:** 1 Master of Ceremony (MC), 1 show assistant, 1 production manager, 1 technical person